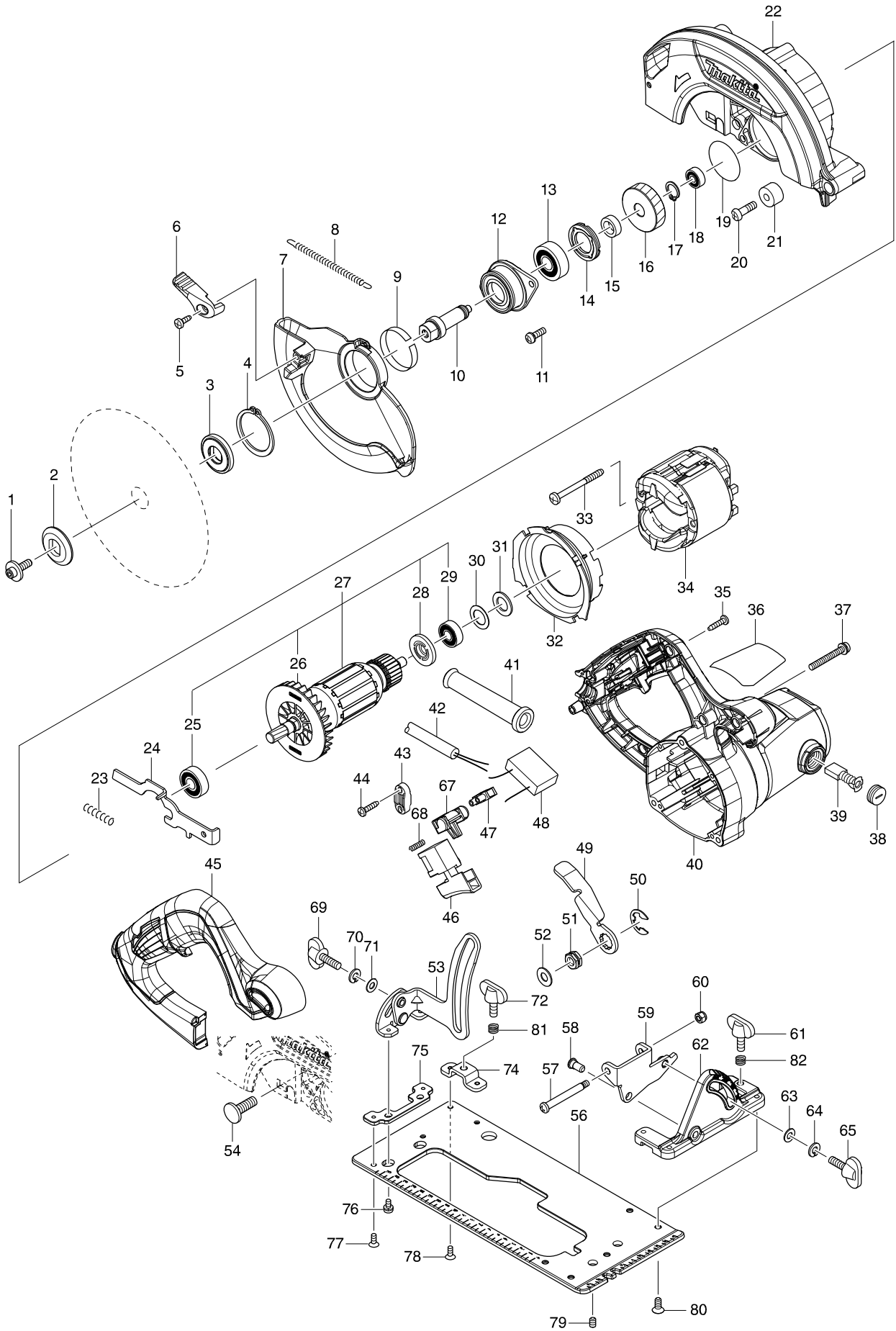


# Numéro du modèle HS6601 165MM CIRCULAR SAW



Position	Référence pièce	Description	Echelle	QTE	N/O	Option 1	Option 2	COMMENTAIRE
001	266024-8	HEX. SOCKET HEAD BOLT M6X20		1				
002	224409-4	OUTER FLANGE 35		1		P3		
003	224473-5	INNER FLANGE 35		1				
004	961155-5	RETAINING RING S-38		1		P9		
005	266034-5	TAPPING SCREW CT 4X16		1		P1		
006	272258-3	LEVER 37		1		P2		
007	319307-6	SAFETY COVER		1				
008	231893-6	TENSION SPRING 4		1				
009	345391-5	THICKNESS RING		1		P1		
010	326444-9	SPINDLE		1				
011	911226-8	PAN HEAD SCREW M5X18		2				
012	319088-2	BEARING BOX		1				
013	211129-9	BALL BEARING 6201DDW		1		P19		
014	285852-2	BEARING RETAINER 19-33		1				
015	257173-2	RING 12		1		P2		
016	227793-6	HELICAL GEAR 38		1				
017	961052-5	RETAINING RING S-12		1		P2		
018	210028-2	BALL BEARING 606ZZ		1		P2		
019	213512-6	O RING 39		1		P6		
020	265117-8	+PAN HEAD SCREW M6X20		1		P1		
021	262502-6	RUBBER SLEEVE 6		1		P5		
022	143224-6	BLADE CASE COMPLETE		1				
C10	213821-3	O-RING 26		1				
023	233117-6	COMPRESSION SPRING 6		1		P1		
024	345317-7	SHAFT LOCK		1		P1		
025	210059-1	BALL BEARING 6000DDW		1		P20		
026	240064-4	FAN 70		1		P2		
027	513459-7	ARMATURE ASS'Y 240V		1				
D10		INC. 25,26,28,29						
028	681644-1	INSULATION WASHER		1		P2		
029	210005-4	BALL BEARING 608DDW		1		P13		
030	253192-6	FLAT WASHER 14		1		P3		
031	261109-5	RUBBER WASHER 13		1				
032	455354-4	BAFFLE PLATE		1				
033	266418-7	TAPPING SCREW 5X55		2		P1		
034	593894-5	FIELD ASSEMBLY 240V		1				
C10	654020-2	RING TERMINAL		2		P4		
C20	654501-6	CONNECTOR P-1.25		2		P3		
035	266326-2	TAPPING SCREW 4X18		5		P2		
036	851N51-8	HS6601 NAME PLATE		1				
037	265104-7	PAN HEAD SCREW M5X40		3		P1		
038	643750-0	BRUSH HOLDER CAP 7-11		2		P3		
039	191963-2	CARBON BRUSH CB-303		1		P12		
040	142798-4	MOTOR HOUSING COMPLETE		1				
C10	643708-9	BRUSH HOLDER 5-11		2		P7		
041	682540-6	CORD GUARD 9.3-90		1				
042	665865-3	POWER SUPPLY CORD 1.0-2-2.5		1				
043	687124-5	STRAIN RELIEF		1		P1		

Position	Référence pièce	Description	Echelle	QTE	N/O	Option 1	Option 2	COMMENTAIRE
044	266326-2	TAPPING SCREW 4X18		2		P2		
045	455362-5	HANDLE COVER		1				
046	650245-6	SWITCH SGE115CDY-10		1				
047	654532-5	TERMINAL BLOCK 1P		1		P9		
048	645192-4	NOISE SUPPRESSOR		1		P1		
049	346311-2	LEVER PLATE		1		P2		
050	257953-6	BOW STOP RING E-12		1		P1		
051	252199-9	HEX. NUT M8-13		1		P1		
052	941201-0	FLAT WASHER 8		1		P1		
053	161337-1	DEPTH GUIDE COMPLETE		1				
054	266396-1	FLAT HEADSQUARE NECKBOLT M8X2		1		P1		
056	346894-2	BASE		1				
057	265118-6	+ PAN HEAD SCREW M5		1		P1		
058	256480-0	SHOULDER PIN 6-7		1		P1		
059	346827-7	ANGULAR GUIDE		1				
060	252103-8	HEX. LOCK NUT M5-8		1		P2		
061	265701-9	SCREW M6X14		1				
062	319308-4	ANGULAR PLATE		1				
063	941151-9	FLAT WASHER 6		1		P1		
064	942151-2	SPRING WASHER 6		1		P1		
065	265708-5	SCREW M6X20		1		P3		
067	453284-3	LOCK OFF BUTTON		1		P1		
068	231469-9	COMPRESSION SPRING 4		1		P2		
069	265708-5	SCREW M6X20		1		P3		
070	942151-2	SPRING WASHER 6		1		P1		
071	941151-9	FLAT WASHER 6		1		P1		
072	265701-9	SCREW M6X14		1				
074	346847-1	BRACKET		1				
075	346846-3	PLATE		1				
076	911106-8	PAN HEAD SCREW M4X8		2		P1		
077	912107-9	COUNTERSUNK HEAD SCREW M4X8		2		P1		
078	912107-9	COUNTERSUNK HEAD SCREW M4X8		2		P1		
079	266436-5	H.S.SET SCREW(FLAT POINT)M5X8		2				
080	912212-2	COUNTERSUNK HEAD SCREW M5X12		5		P1		
081	233376-2	COMPRESSION SPRING 8		1		P1		
082	233376-2	COMPRESSION SPRING 8		1		P1		
A01	164095-8	GUIDE RULE		1		A9		
A02	B-02917	T.C.T.SAW BLADE 165MM		1				
A03	783217-7	HEX. WRENCH 5		1		A1		
A04	196520-1	DUST NOZZLE SET		1				
A05B	821551-8	CONNECTOR PLASTIC CASE (TYPE3)		1		A30		
C10	453974-8	LATCH		4		P1		
A06B	838314-5	INNER TRAY		1				
A07B	807W72-2	HS6601J INDICATION LABEL		1				
A08B	807W73-0	HS6601J PLASTIC CASE LABEL		2				